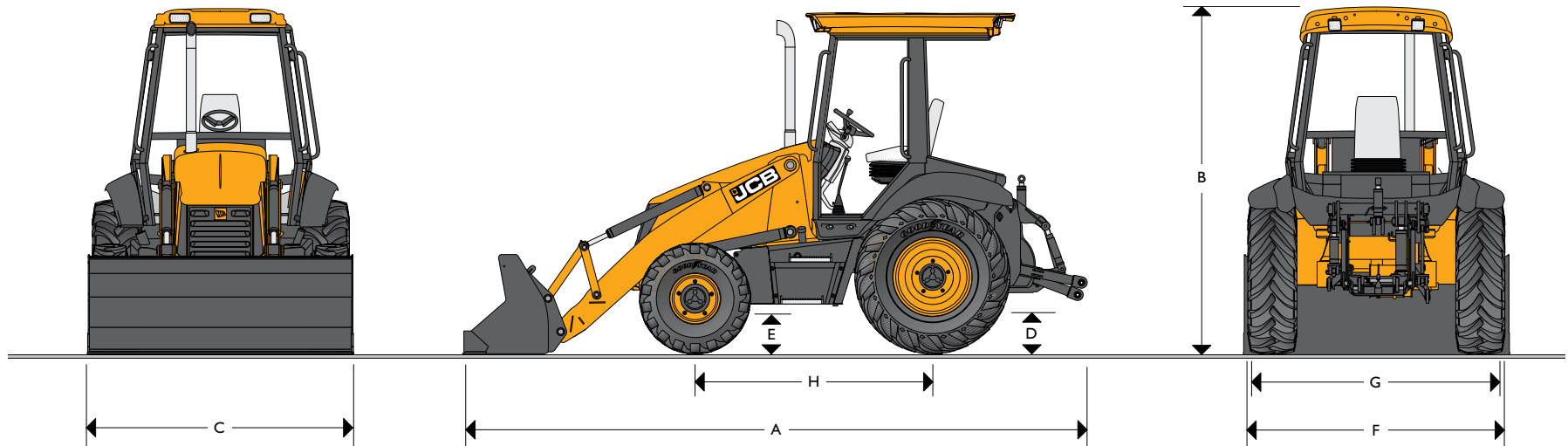


STATIC DIMENSIONS

Machine model	3C 14 ft 2WD ft-in (meter)	3C 14 ft 4WD ft-in (meter)
A Transport length	23-0 (7.01)	23-0 (7.01)
B Transport height	11-2 (3.401)	11-2 (3.40)
C Height to top of cab/canopy	9-3 (2.82)	9-3 (2.82)
D Overall width with loader bucket	7-4 (2.24)	7-4 (2.24)

Machine model	3C 14 ft 2WD ft-in (meter)	3C 14 ft 4WD ft-in (meter)
E Ground clearance - main frame	1-2 (0.36)	1-2 (0.36)
F Ground clearance - front axle	1-2 (0.36)	0-10 (0.25)
G Front - width over tires	7-1 (2.16)	7-4.5 (2.25)
H Rear - width over tires	7-3 (2.21)	7-3 (2.21)
I Wheelbase	6-11 (2.11)	7-1 (2.16)



STATIC DIMENSIONS

Machine model	3C LL – 4WD
	ft-in (meter)
A Transport length	18-1 (5.50)
B Height to top of cab/canopy	9-3 (2.82)
C Overall width with bucket	7-4 (2.24)
D Ground clearance – main frame	1-2 (0.35)

Machine model	3C LL – 4WD
	ft-in (meter)
E Ground clearance – front axle	0-10 (0.25)
F Front – width over tires	7-4.5 (2.25)
G Rear – width over tires	7-3 (2.21)
H Wheelbase	7-11 (2.16)



OPERATING WEIGHTS

3C 14 FT/3C 15FT: Operating weight includes machine equipped with standard loader bucket, 24" HD backhoe bucket, full fluid levels and SAE operator.

3C LL: Operating weight includes machine equipped with standard loader bucket, 3 point hitch assembly, full fluid levels and SAE operator (weight does not include rear implement).

		14 ft		LL
		2WD	4WD	4WD
Base unit	lb (kg)	13046 (5919)	13376 (6069)	12530 (5685)
Add for:				
Cab	lb (kg)	440 (200)	440 (200)	440 (200)
Extradig	lb (kg)	998 (453)	998 (453)	N/A
SAE operator	lb (kg)	176 (80)	176 (80)	176 (80)

JCB 444 ENGINE

Four cylinder, direct injection diesel, spin-on oil filler, fuel filter, with water separator, dual element air cleaner with aspiration system eliminating the need for a precleaner. EPA Tier III CARB Compliant.

Machine model	3C
Displacement	268 cu. inches (4.4 liters)
Aspiration	Turbo
Rated engine RPM	2200
Horsepower ratings	HP (kW)
SAE gross	92 (69)
SAE net	90 (67)
Maximum torque	lb-ft (Nm)
SAE gross	301 (408)
SAE net	282 (382)
Max. torque RPM	1300

STEERING

Power hydrostatic system utilizing the main hydraulic pump via a steering priority valve. Emergency power off steering.

3C	2WD	4WD
Steering axles	Front	Front
Type	Hydrostatic	Hydrostatic
Steering turns – lock to lock	2.75	2.75
	ft-in (meter)	ft-in (meter)
Turning circle – unbraked	25-3 (7.70)	26-4 (8.05)
Loader clearance – circle	33-10 (10.31)	34-11 (10.64)

ENGINE SUPPORT SYSTEM

Engine support system is designed for ease of daily checks, routine maintenance and longer service intervals.

Fuel type	Diesel.
Fuel filter	Replaceable cartridge plus water/sediment separator prefilter.
Air cleaner	Dual, dry element type with self cleaning internal air intake precleaner.
Oil filter and lubrication	Full flow, spin-on type filter.
Cooling system	Hot climate specification, pressurised 14.5 psi (1.0 bar) suction fan. Pressurised recovery tank with integral filler neck.

ELECTRICAL AND INSTRUMENTATION

12 volt negative ground, utilizing wiring and connectors meeting IP69 water and dust ingress test standard.

Central fuse panel supplemented with main circuit breakers at battery positive terminal.

Gauges Tachometer, engine coolant temp, fuel level, hourmeter.

Warning system Audible and visual system for engine, transmission, park brake, battery charge condition, air cleaner restriction.

Battery 12V, 900 CCA. 110 A/hr.

Pre-wire Pre-wire for all beacon, radio speakers in cab on 3C 15FT

Horn Front horn button mounted on forward-to-reverse lever.

Accessory 12V power outlet on instrument panel.

Reverse alarm Standard fit. Meets SAE requirements.

Alternator 95 amp



TRANSMISSION

The JCB Transmissions are designed and built specifically for JCB Backhoe Loaders. They feature synchronized shifting in all gears. Power shift allows you to shuttle between forward and reverse to maximize production.

3C	14 FT		LL
	2WD	4WD	4WD
Manufacturer	JCB	JCB	
Type	Synchro shuttle	Synchro shuttle	Synchro shuttle
Torque converter	Single stage, dual phase	Single stage, dual phase	Single stage, dual phase
Torque converter ratio	3.01:1	3.01:1	3.01:1
Gears forward/reverse	4F/4R	4F/4R	4F/4R
Gear selection	Manual	Manual	Manual
Shuttle control – F/R	Power shuttle	Power shuttle	Power shuttle
Travel speeds	mph (kph)	mph (kph)	mph (kph)
Tires equipped	19.5-24	19.5-24	19.5-24
Gear 1	3.3 (5.4)	3.2 (5.5)	3.4 (5.5)
Gear 2	5.4 (8.7)	5.3 (8.6)	5.6 (8.9)
Gear 3	11.5 (18.6)	11.4 (18.3)	11.9 (19.1)
Gear 4	20.2 (32.4)	22.2 (36.2)	22.5 (36.0)

SERVICE CAPACITIES

3C	
	gal (liter)
Cooling system	4.9 (19)
Fuel tank	34.4 (130)
Engine oil with filter	3.9 (15)
Synchro shuttle trans with filter	4.2 (16)
Rear axle	4.2 (16)
Front drive axle	4.2 (16)
Drive axle hubs – each	0.4 (2)
Hydraulic tank	19.8 (75)
Hydraulic system incl. tank	30.4 (115)

HYDRAULIC SYSTEM

Open center system gear pump system which supplies oil for loader, backhoe and steering systems. Side mounted hydraulic tank with sight glass and lockable cap. JCB cylinders, hydraulic hoses with abrasion protection.

3C	2WD
	gpm (lpm)
Pump output	29 (110)
	psi (bar)
System relief pressure	3300 (228)
Filter rating	5/12 micron
Number of pumps	1

SMOOTH RIDE SYSTEM (Optional)

The JCB Smooth Ride System (SRS) consists of an accumulator installed in line with the loader lift cylinders. When activated, the Smooth Ride System allows the loader arms to float slightly. This action counteracts variations in road or site surfaces and provides the operator with a smooth ride.

Activation Electric switch on instrument panel. Manually controlled by the operator for maximum benefit and user flexibility.



FRONT AXLE

JCB front axles are designed and built specifically for backhoe loaders and incorporate double reduction, outboard planetary drives front and rear.

Machine model	3C
Axle ratings	lb (kg)
Static load rating	36383 (16508)
Dynamic load rating	18928 (8586)
SAE J43 rating	11437 (5189)
Axle ossolation	11° each way – 22° total

REAR AXLE

JCB rear axles are designed and built specifically for backhoe loaders and accept a wide variety of tire combinations.

Machine model	3C
Type	JCB limited slip differential outboard planetary drive
Axle ratings	lb (kg)
Static load rating	55125 (25011)
Dynamic load rating	27562 (12505)
SAE J43 rating	12956 (5878)

OPERATOR'S AREA

Meets SAE ROPS/FOPS requirements. Standard features include the following:

3C	Cab	Canopy
Heavy duty suspension seat	•	•
Heater/pressurizer	•	
Front and rear wipers	•	
Front and rear window washers	•	
2" seat belt (3" option)	•	•
4 front and 2 rear work lamps	•	•
12V power outlet	•	•
Instrument vandal cover		•
Brake lights, hazard lamps, turn signals	•	•
Interior rear view mirror	•	•
Side-mounted instrument panel	•	•
Deluxe floor mat	•	•
Cup holder	•	•

TIRES

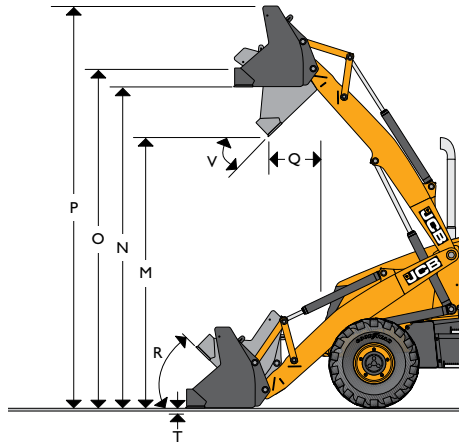
Tires listed are most popular sizes. See your JCB Dealer for a full listing of available tire sizes and tread designs. Tires are listed in front and rear combinations that are compatible with axle available.

3C	14 FT	LL
11L-16, front	•	•
14-17.5, FWD, front	•	•
19.5L-24, R4, rear	•	•
21L-24, R4, rear		

BRAKES

Hydraulically actuated, self-adjusting, oil immersed, inboard, multi-plate type. Separate master cylinder and brake oil reservoir. Independent disk and caliper type parking brake mounted on rear of transmission.

LOADER DIMENSIONS



LOADER

JCB loaders feature a 6-in-1 bucket, three-spool loader valve, dual lever loader control and loader pipework.

	14 FT		LL	
	2WD	4WD	2WD	4WD
BUCKETS	ft-in (meter)	ft-in (meter)	ft-in (meter)	ft-in (meter)
Overall width with bucket	7-4 (2.24)	7-4 (2.24)	7-4 (2.24)	7-4 (2.24)
M Dump height	8-10 (2.69)	8-10 (2.69)	8-10 (2.69)	8-10 (2.69)
N Load over height	10-6 (3.20)	10-6 (3.20)	10-6 (3.20)	10-6 (3.20)
O Loader hinge pin height	11-1 (3.38)	11-1 (3.38)	11-1 (3.38)	11-1 (3.38)
P Maximum operating height	13-4 (4.06)	13-4 (4.06)	13-4 (4.06)	13-4 (4.06)
Q Dump reach at full height	2-8 (0.81)	2-8 (0.81)	2-8 (0.81)	2-8 (0.81)
R Rollback @ ground	41°	41°	41°	41°
T Digging depth	0-5 (0.13)	0-5 (0.13)	0-5 (0.13)	0-5 (0.13)
V Dump angle	42°	42°	42°	42°

LOADER – General Purpose Bucket

JCB loaders provide high lift and breakout forces for maximum productivity. Load retention system provides bucket back on the lift cycle for maximum load retention. Two spool valve is standard.

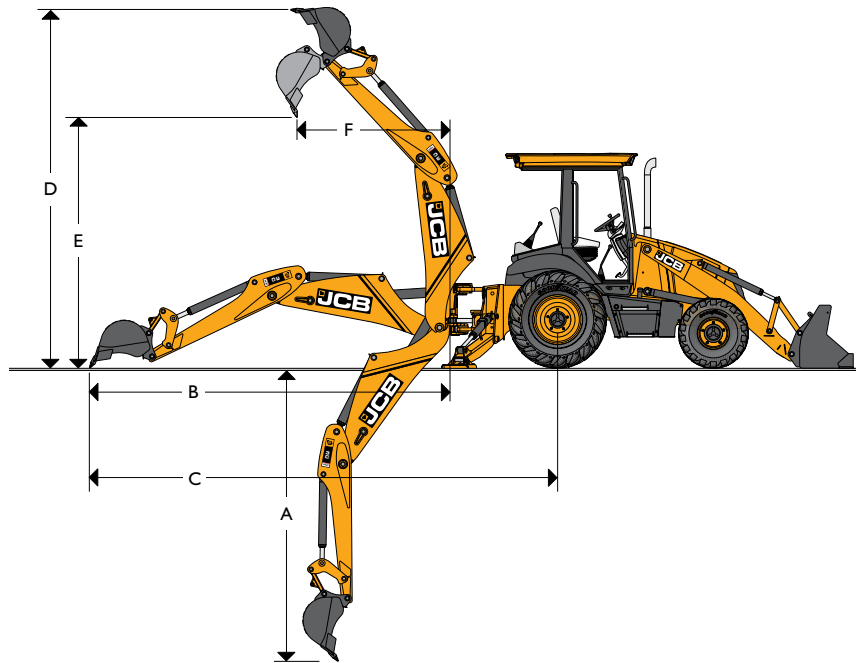
3C	14 FT	LL
	lb (kg)	lb (kg)
Bucket breakout force	11730 (5322)	11730 (5322)
Lift capacity to full height	6750 (3062)	5511 (2500)

LOADER – 6-in-1 Bucket

3C	14 FT	LL
	lb (kg)	lb (kg)
Bucket breakout force	12127 (5502)	12127 (5502)
Lift capacity to full height	6211 (2818)	*4960 (2250)

*NOTE: Lift capacity to full height is factored with 2600lb implement or equivalent weight tray 12" behind hitch pickup points for 3C LL loader arm breakout force.

LOADER DIMENSIONS



BACKHOE DIMENSIONS – 3C 14FT

	standard backhoe	Extradig – retracted	Extradig – extended
3C	14FT	14FT	14FT
	ft-in (meter)	ft-in (meter)	ft-in (meter)
A SAE dig depth – max.	14-4 (4.37)	14-7 (4.45)	18-0 (5.49)
A SAE dig depth – 2' flat bottom	14-3 (4.34)	14-6 (4.42)	17-10 (5.44)
B Reach from swing pivot	17-7 (5.36)	17-10 (5.44)	21-0 (6.40)
C Reach from rear axle center	21-6 (6.55)	21-10 (6.65)	25-0 (7.62)
D Maximum operating height	17-7 (5.36)	17-8 (5.38)	20-0 (6.10)
E Loading height	10-4 (3.15)	10-6 (3.20)	11-10 (3.61)
F Loading reach	5-8 (1.73)	5-8 (1.73)	9-1 (2.77)
Swing arc – degrees	180°	180°	180°
Stabilizers – transport	7-2 (2.18)	7-2 (2.18)	7-2 (2.18)
Stabilizers – operating	10-6 (3.20)	10-6 (3.20)	10-6 (3.20)
Leveling angle – degrees	15°	15°	15°
Bucket rotation –	degrees 185° max. power/201° max. rotation		

BACKHOE BUCKETS – 3C 14FT

JCB Backhoe Loader buckets are designed specifically for use on JCB machines. Dual position tipping link provides positions to maximize tearout force or to maximize rotation for straight wall digging and improved load retention. All JCB buckets include heavy-duty features consisting of a 1"x18" cutting edge, back straps, box section cross member, and full length, chamfered side cutters.

Bucket width – in.	12	18	24	24	30	36
Bucket width – mm	305	455	610	610	760	910
Number of teeth	3	4	4	5	5	6
Heavy duty trenching buckets						
Capacity – cu.ft.	2.8	4.9	7.1	7.1	9.2	11.3
Capacity – cu.m	0.08	0.14	0.20	0.20	0.26	0.32
Weight – lbs	293	359	408	419	478	544
Weight – kg	100	128	145	150	166	189
	12	18	24	24	30	36
Heavy duty high capacity trenching buckets						
Capacity – cu.ft.		5.3	8.5	8.5	11.3	14.1
Capacity – cu.m		0.15	0.24	0.24	0.32	0.40
Weight – lbs		430	509	509	588	668
Weight – kg		195	231	231	267	303

See your JCB Dealer for availability of other backhoe buckets and attachments.

THREE POINT HITCH – 3C LL

Category 2 hitch, featuring power up, power down and hydraulic tilt.

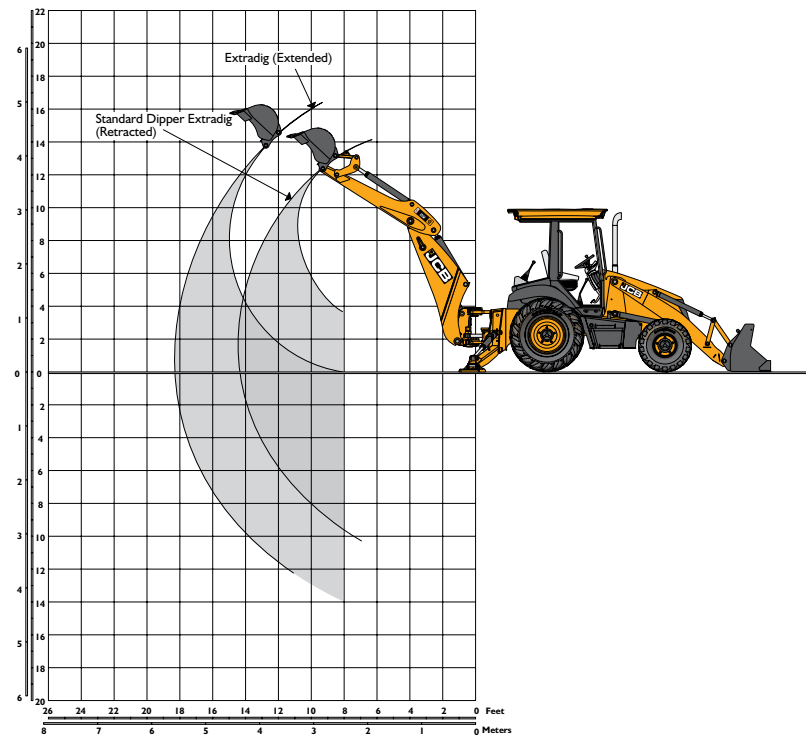
Hitch category	II
Hitch lift ram	Single double acting cylinder
	in (mm)
Bore diameter	3.15 (80)
Rod diameter	1.97 (50)
Stroke	8.8 (226)
	lb (kg)
Lift capacity at hitch pins	7000 (3176)
Lift capacity at 600mm	3800 (1724)
Down pressure	1300 (590)
	in (mm)
Lower link travel	9 to 35.5 (228 to 902)
Departure angle – degrees	15°



BACKHOE LIFTING PERFORMANCE – 3C 14 ft

		standard backhoe	Extradig – retracted	Extradig – extended
Dipper lift capacity – SAE J31				
+ 4 feet	lbs	6615	4680	3195
+ 6 feet	lbs	5405	3970	2460
+ 8 feet	lbs	4945	3710	2540
+ 10 feet	lbs	4200	3690	2240
+ 12 feet	lbs	2970	3450	1745
Boom lift capacity – SAE J31				
+ 12 feet	lbs	3155	2630	1420
+ 8 feet	lbs	2665	2280	1280
+ 4 feet	lbs	2640	2180	1275
Ground level	lbs	2735	1950	1390
- 4 feet	lbs	2555	1770	1675
- 8 feet	lbs	2420	1610	1800
- 10 feet	lbs	2430	1430	1810

Lift capacity figures comply with SAE J31. All figures are stated in pounds (kilograms). The large arc indicates boom lift. The small arc indicates dipper lift with the boom at 63 degrees. Units are equipped with standard equipment as listed in this data sheet and a 24" backhoe bucket.



BREAKOUT FORCES

	lbf (kgf)
Bucket Force	11470 (5204)
Dipper Force	7000 (3176)

JCB HYDRAULIC BREAKERS

JCB hydraulic breakers are designed for use on JCB Backhoe Loaders. They feature constant blow energy, pressure damping, heavy-duty side plates and high impact frequency for maximum production. Coupled with factory installed hydraulic breaker circuit, the JCB breakers and Backhoe Loader make a perfect demolition combination. Model 360Q is equipped with sound insulation for quiet operation.

Breaker model	260	360	360Q
Energy class – ft./lb	500	750	750
Impact frequency – bpm	400-2000	600-1800	600-1800
Oil flow range – gpm (lpm)	6.6-26 (25-100)	13-40 (50-150)	13-40 (50-150)
Operating weight – lb (kg)	573 (260)	891 (405)	921 (418)
Operating pressure – psi (bar)	1450-2100 (100-145)		
Tool diameter – in. (mm)	2.48 (63)	2.75 (70)	2.75 (70)

A wide variety of tools are available for JCB breakers. See your JCB Dealer.



A GLOBAL COMMITMENT TO QUALITY

JCB's total commitment to its products and customers has helped it grow from a one-man business into one of the world's largest manufacturers of backhoe loaders, crawler excavators, wheeled excavators, telescopic handlers, wheeled loaders, dump trucks, rough terrain fork lifts, industrial fork lifts, mini/midi excavators, skid steer loaders and tractors.

By making constant and massive investments in the latest production technology, the JCB factories have become some of the most advanced in the world.

By leading the field in innovative research and design, extensive testing and stringent quality control, JCB machines have become renowned all over the world for performance, value and reliability.

And with an extensive dealer sales and service network in over 150 countries, we aim to deliver the best customer support in the industry.

Through setting the standards by which others are judged, JCB has become one of the world's most impressive success stories.



2845-DWUSA 2/11

JCB Headquarters Savannah, 2000 Bamford Blvd., Savannah, GA 31322. Tel: 912.447.2000. Fax: 912.447.2299. www.jcb.com

JCB reserves the right to change design, materials and/or specifications without notice. Specifications are applicable to units sold in the United States and Canada. The JCB logo is a registered trademark of J C Bamford Excavators Ltd.